

**\* ADDITIONAL LOTS - SEPTEMBER AUCTION - ADDITIONAL LOTS \***

**Lot 19a**



**28a and 28b Lower Hillgate, Stockport, Cheshire SK1 1JE**

Vacant refurbished office/shop with two separate one bedroom flats above

**Directions** Continuation of Higher Hillgate, off A6 south of Stockport Centre

**Accommodation**  
*Ground Floor:* Retail Zone A + B, kitchen and WC; total 25.8 sq.m.

*First Floor:* Refurbished flat: living room and kitchen, shower room, bedroom

*Second Floor:* Refurbished flat: living room and kitchen, shower room, bedroom

**Possession** Vacant on completion

**Viewing** Auction Department 0161-443 4740

**Guide Price: circa £120,000**

**Lot 20a**



**14 Shadows Lane, Mossley, Lancashire OL5 9BS**

Two bedroom end terraced house let on Regulated Tenancy situated on Saddleworth/Mossley border

**Directions** Off A635 Manchester Road

**Tenancies** The property is subject to a Regulated Tenancy at a registered rent of £25.00 per week, effective date 30th May 2000. Re-registration is now due.

**Accommodation** NOT INSPECTED BUT REPORTED TO BE  
*Ground Floor:* Lounge, kitchen  
*First Floor:* Two bedrooms  
*Exterior:* Rear yard

**Viewing** External viewing only - the tenant must not be disturbed

**Guide Price: £60,000 - £70,000**

**\* ADDITIONAL LOTS – SEPTEMBER AUCTION – ADDITIONAL LOTS \***

**Lot 68**



**6 Rymer Grove, Walton, Liverpool L4 5ST**

Vacant two bedroom terraced house  
BY ORDER OF THE MORTGAGEES IN POSSESSION



**Directions** Off Luxmore Road, Walton Lane A580

**Accommodation**  
*Ground Floor:* Entrance hall, lounge, dining room, kitchen  
*First Floor:* Two bedrooms, bathroom *Exterior:* Yard

**Note** uPVC double glazing

**Possession** Vacant on completion

**Viewing** Auction Department 0161-443 4740

**Guide Price: £38,000+**

**Lot 69**



**3 Rutland Street, Ashton under Lyne, Lancashire OL6 6SB**

Vacant two bedroom terraced house

**Directions** Off Granville Street, Stamford Street A635

**Accommodation**  
*Ground Floor:* One reception room, kitchen  
*First Floor:* Two bedrooms, bathroom/WC  
*Exterior:* Rear yard

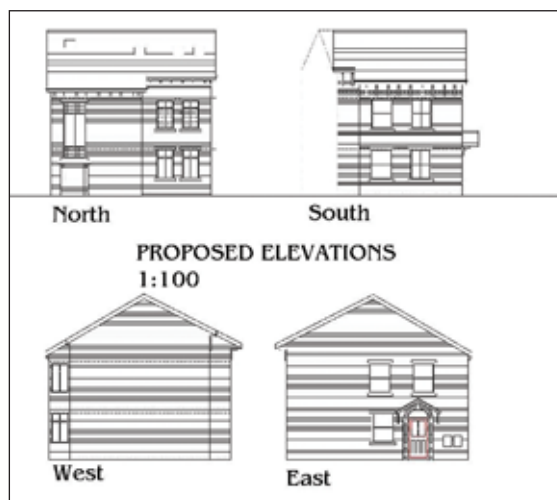
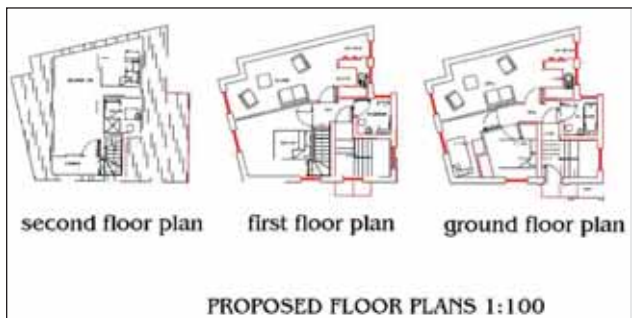
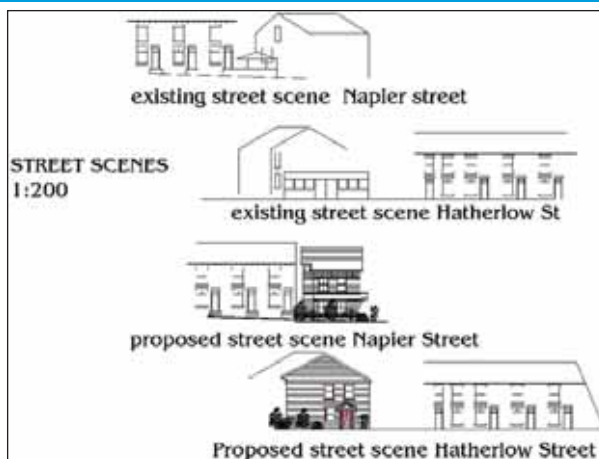
**Possession** Vacant on completion

**Viewing** Auction Department 0161-443 4740

**Guide Price: £40,000+**

**\* ADDITIONAL LOTS - SEPTEMBER AUCTION - ADDITIONAL LOTS \***

**Lot 70**



**Land and buildings at 24 Hatherlow Lane, Hazel Grove, Stockport, Cheshire SK7 4EP**

Land with planning permission for two 2-bedroom apartments

<b>Directions</b>	Off London Road A6 within walking distance of Hazel Grove shops and amenities
<b>Accommodation</b>	Currently a small industrial unit producing rent of £275.00 per month with planning permission granted for two two-bedroom apartments (Stockport MBC Appl. No. DC041620)
<b>Possession</b>	Vacant on completion
<b>Viewing</b>	Open site

**Guide Price: £60,000 - £65,000**